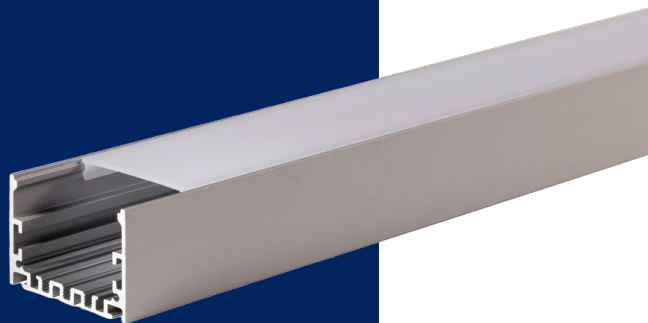




Profile

LS-EXT-SUR-50*35

Wide surface-mounted profile.
Durable, lightweight aluminum, a variety
of lenses, options, and accessories.
Fait au Québec - Canada.



DESCRIPTION

Wide surface-mounted profile

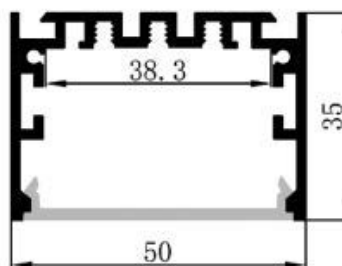
Highly versatile and durable aluminum (AL6063-T5)

Available in clear, frost or opal lens

Available in natural aluminum, black, or white finishes
Custom sizes available upon request

Compatible with our 10-12mm LED tapes

DIMENSIONS



ORDER SHEET - PROFILE

1 PROFILE	2 STRIP	3 CRI	4 CCT	5 LENGTH	6 UNIT	7 LENS*
LS-EXT-SUR-50*35						

8 FINISH*	8 FINISH*	9 PROTECTION

10 SPECIAL REQUEST** *Quantity xx clips, 4-foot power supply wire, etc.*

Legend

Refer to the corresponding number in the box for the information to be provided.

2

- 12V-400LM
- 12V-RGBW
- 24V-300LM
- 24V-400LM
- 24V-600LM
- 24V-800LM
- 24V-HP
- 24V-LL
- 24V-RGBW

3

- 80
- 90

4

- 2700k
- 3000k
- 3500k
- 4000k
- 5000k
- RGBW
- on demand

5

Specify the desired length.

6

Select the unit of measurement for the length provided:

- Meters
- Inches
- Feet

7

- CL: clear
- Gl: frost
- OP: opal
- None
- * Availability to be confirmed

8

- ALU: aluminium
- WHT: white
- BLK: black
- CTM: custom
- * Availability to be confirmed

9

- IP20 dry interior
- IP65 wet interior

10

Provide any other information required to specify your order.

*AVAILABILITY TO BE CONFIRMED / ** STANDARD 24" POWER SUPPLY WIRE

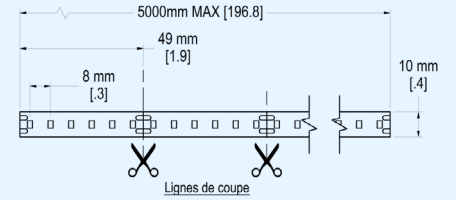
POPULAR STRIP



MODEL	STRIP	DIMENSIONS
-------	-------	------------

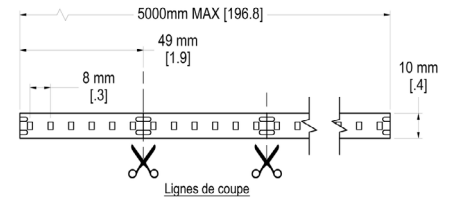
LS-STRIP-24V-400LM

24-volt strip
 with 400 lumen per foot



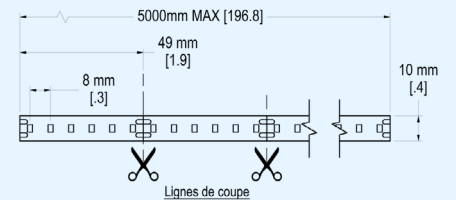
LS-STRIP-24V-600LM

24-volt strip
 with 600 lumen per foot



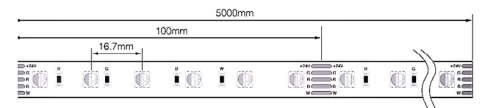
LS-STRIP-24V-800LM

24-volt strip
 with 800 lumen per foot



LS-STRIP-24V-RGBW

24-volt RGBW strip



ACCESSORIES

For more
options

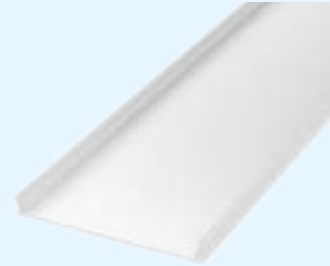


MODEL

LS-EXT-SUR-50*35-LENS-OPAL

LS-EXT-SUR-50*35-LENS-FROST

LS-EXT-SUR-50*35-LENS-CLEAR

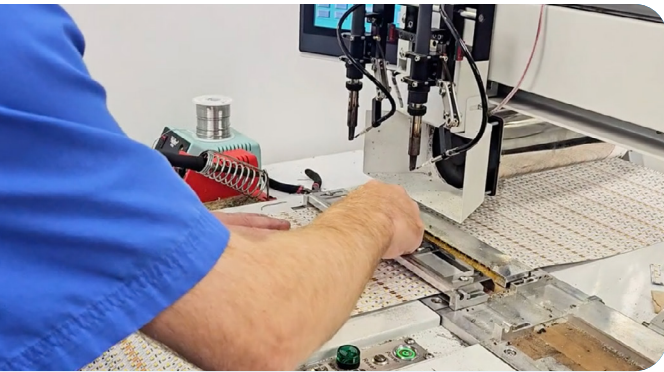


LS-EXT-SUR-50*35-END CAP



Why | Pourquoi

BOREALUX



- ✓ 100% Canadian LED manufacturer
- ✓ 5 year warranties
- ✓ Very fast delivery
- ✓ Very high custom production capacity

- ✓ Manufacturier DEL 100 % Canadien
- ✓ Garanties de 5 ans
- ✓ Livraison très rapide
- ✓ Capacité très élevée de production sur mesure

Contact Us Contactez-nous

- ☎ 1-888-540-4713
- ✉ vi@borealux.com
- 📍 670 rue Bouvier, Suite 108,
Quebec, Canada G2J 1A7

BOREALUX.COM



Discover all our products | Découvrez tous nos produits