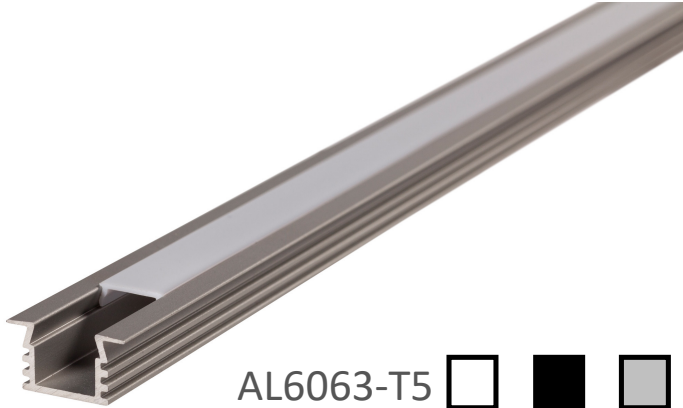




Client  Date  Qty   
 Project  Type  PO#

## LS-EXT-ENC-22\*13



AL6063-T5



### Description

The LS-EXT-ENC-22\*13 is an industry standard.

Cabinet lighting, under-counter lighting, decorative line, etc.

It is used in all situations. Its opaline or frosted lens diffuses the light perfectly.

THESE ARE THE ADVANTAGES OF CHOOSING THE LS-EXT-ENC-22\*13

- Wire Departure from the Back or End of the Extrusion
- Possibility of concealing the spinning behind the extrusion
- Possibility of illuminating surfaces from close proximity

### Compatible LED engine

10mm wide

### Linear weight

0,06 lb/pied, 0,089kg/m

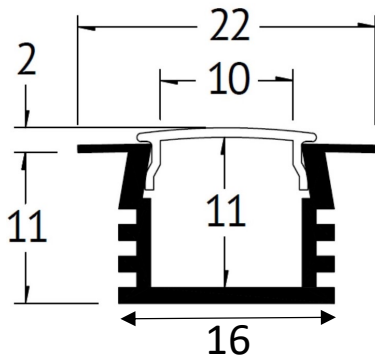




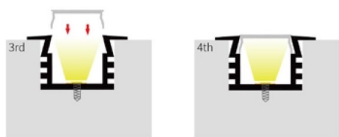
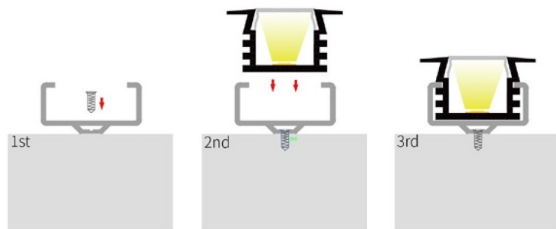
Client  Date  Qty   
Project  Type  PO#

## LS-EXT-ENC-22\*13

### Dimensions



### Installation



### Accessories

- LS-EXT-LEN-OP (opalin)
- LS-EXT-LEN-GI (givré)
- LS-EXT-LEN-CL (claire)
- LS-EXT-LEN-SMOKE (fumée)



LS-EXT-SUR-22\*13-CLIP



LS-EXT-ENC-22\*13-CAP-H  
LS-EXT-ENC-22\*13-CAP-NH

